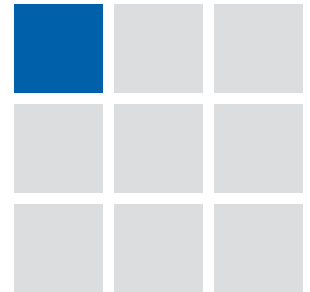


IKP Consulting Engineers

Railway Design



CONSULTING
ENGINEERS



■ Modernization of Kolín – Přelouč section

Railway Design department

The department offers comprehensive design activity in the field of railway infrastructure from the definition of conceptual plan and acquisition of necessary data and surveys to the discussion of proposals with the representatives of railway organizations and involved bodies, including provision of necessary administration decisions. Efficient solutions are proposed on the basis of detailed transport and operation technologies.

Range of activities of the department:

The department provides design documents and consultancy services:

- searching, engineering economy and planning data studies
- preparatory documents for planning permission proceedings
- designs for building permits
- specifications and detailed designs
- opinions on submitted documents
- author and engineering supervision
- consultancy



■ Optimization of Ústí nad Labem – Děčín section, reconstruction of Mojžíř station

In solution of tasks, the department collaborates with the other IKP departments and with proven permanent team of subcontractors and experts.

Experienced team solves the projects of modernization of railway corridors, relocations and reconstruction of regional lines, designs of railway sidings, crossings and stops, conceptual studies of national railways as well as of regional and urban rail systems.

The clients include Správa železniční dopravní cesty, Czech Ministry of Transport, regional and municipal offices, and private entrepreneurs.



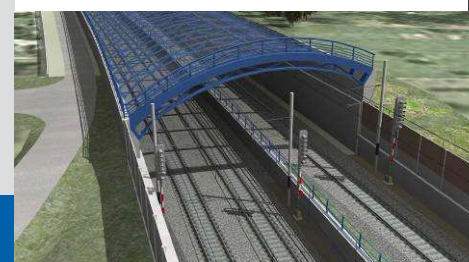
■ Modernization of Horní Dvořiště station



■ Modernization of Praha Libeň – Praha Běchovice section, reconstruction of Praha Běchovice station



■ Modernization of Červenka – Zábřeh section, Mohelnice station



■ New line České Budějovice – Linz, model of Nové Hodějovice underpass



IKP Consulting Engineers, s.r.o.
Jankovcova 1037/49 Brojova 2113/16
170 00 Prague 7 326 00 Plzeň

U Malše 1805/20
370 01 České Budějovice



internet: www.ikpce.com, e-mail: info@ikpce.com, telephone: +420 255 733 111, ISO 9001:2000